

**NEW!**

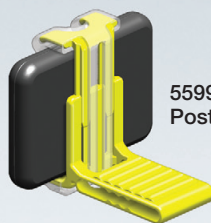
# XCP-DS **FIT**™

UNIVERSAL SENSOR POSITIONING SYSTEM



**Universal design. Custom FIT.**  
**The self-adjusting clip *stretches***  
**to fit your sensor!**

559901  
Anterior



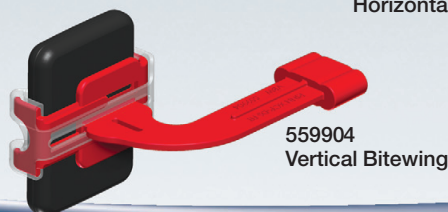
559902  
Posterior



559905  
Endo



559903  
Horizontal Bitewing



559904  
Vertical Bitewing

## The **Stretchy** XCP-DS FIT Universal **Autoclavable** Sensor Holder

Reduce loading time during your digital radiograph procedures with the new XCP-DS FIT Universal Autoclavable Sensor Holder.

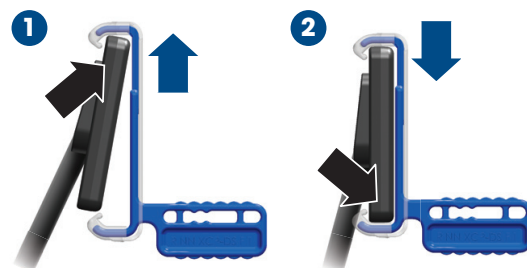
- Universal design provides a **custom fit** to your sensor
- **One holder** works with both size 1 and size 2 sensors for **less inventory**
- **Autoclavable** for low cost per use — **budget friendly!**
- **Rigid sensor support** keeps sensor positioned accurately
- **Silicone-cushioned edges** help provide patient comfort and prevent sensor cover perforations
- Use with the XCP-ORA 3-in-1 Positioning System for **easy paralleling**

559900 XCP-DS Fit Hygiene Kit  
XCP-ORA Arm and Ring, 8 XCP-DS Fit biteblocks (2 each: anterior, posterior, horizontal bitewing, vertical bitewing)

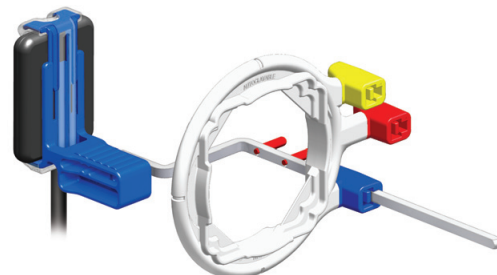
559908 XCP-DS Fit Endo Kit  
1 Endo Aiming Ring, 1 Endo Arm, 2 XCP-DS Fit Endo Biteblocks

559909 XCP-DS Fit Complete Kit  
XCP-ORA Arm and Ring, Endo Ring and Arm, 10 XCP-DS Fit biteblocks (2 each: anterior, posterior, horizontal bitewing, vertical bitewing, endo)

Biteblock Refill Packs 2 biteblocks per pack  
559901 Anterior      559903 Horizontal Bitewing  
559902 Posterior    559904 Vertical Bitewing  
559905 Endo



The biteblock *stretches* for assembly easy.



XCP-DS FIT with XCP-ORA 3-in-1 Positioner

Learn more at  
[RinnCorp.com](http://RinnCorp.com)

For better dentistry

**DENTSPLY**  
**RINN**

www.RinnCorp.com  
800-323-0970